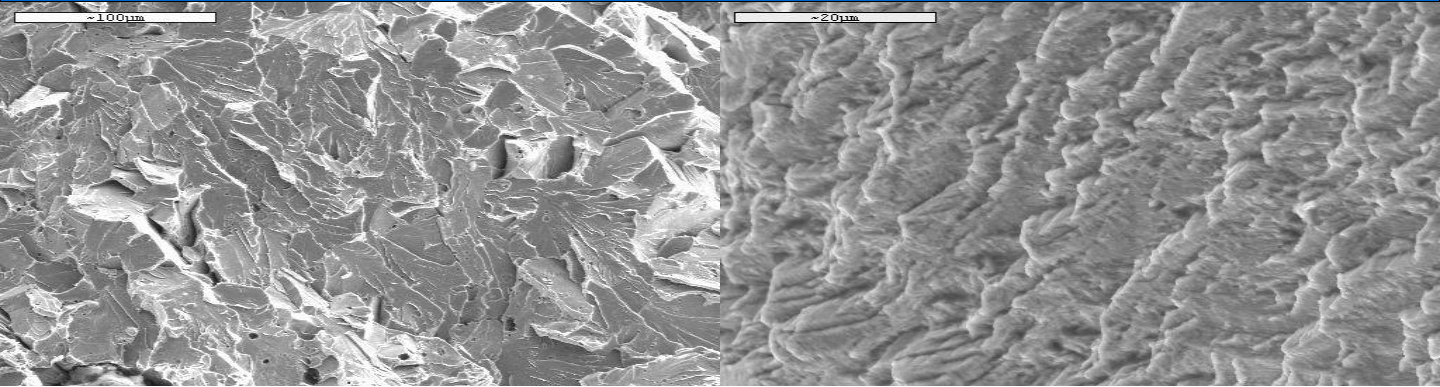


*Defense - Automotive - Commercial - Industrial*



# Globe Tech, LLC

## Welding Engineering & Metallurgical Engineering



*Product & Process Development - Failure Analysis - Testing Services*

# Globe Tech, LLC

## Welding Engineering & Metallurgical Engineering

Globe Tech's engineering and testing services laboratory is operated by educated and experienced personnel using the latest high tech equipment available in the areas of metallurgical and welding engineering. Let us assist you with your engineering and testing requirements.

### Metallography & Mechanical Testing

- Optical Microscopy and Image Analysis
- SEM
- Micro-hardness Testing
- Weld Measurement and Analysis
- Macroetching
- Photomacrography
- Rockwell Testing
- Brinell Testing
- Tensile Testing
- Component Testing
- Failure Analysis
- Optical and Electron Fractography



### In House NDT Capabilities ASNT compliance

- MT- Magnetic Particle
- PT-Liquid Penetrant
- UT-Ultrasonic

### AWS/OEM/EN/ISO Expertise In:

- AWS D1.1
- AWS D1.2
- AWS D1.3
- AWS D1.6
- AWS D1.9
- AWS D14.1
- AWS D15.1
- AWS D17.1
- BAE
- Boeing
- General Dynamics
- AM General
- Textron
- TACOM
- EN 1418
- ISO 15609-1
- ISO 3834-2
- ISO 15613

### Specialized Equipment

- CMM
- 3D Laser Scanner
- RS Technologies Torque Tension System
- SLA 3D Printer
- Residual Stress Measurement

### Welding Engineering

- Welding Supplier Auditing
- Development of Weld Procedures & Qualifications
- Welder Training Services
- Weld Repair
- Weld Quality Analysis
- Expert Witness



Globe Tech, LLC  
734-656-2200  
101 Industrial Drive  
Plymouth, MI 48170  
[www.globe-tech.biz](http://www.globe-tech.biz)

